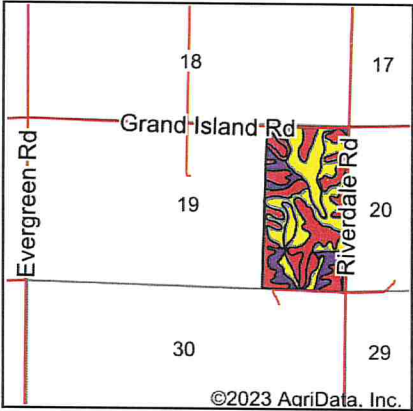


Soils Map









State: **Nebraska**
County: **Buffalo**
Location: **19-11N-16W**
Township: **Rusco**
Acres: **321.3**
Date: **12/26/2023**

Maps Provided By:



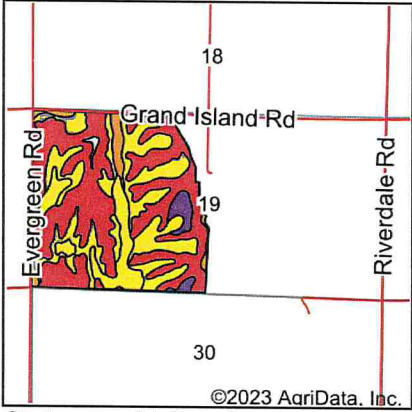
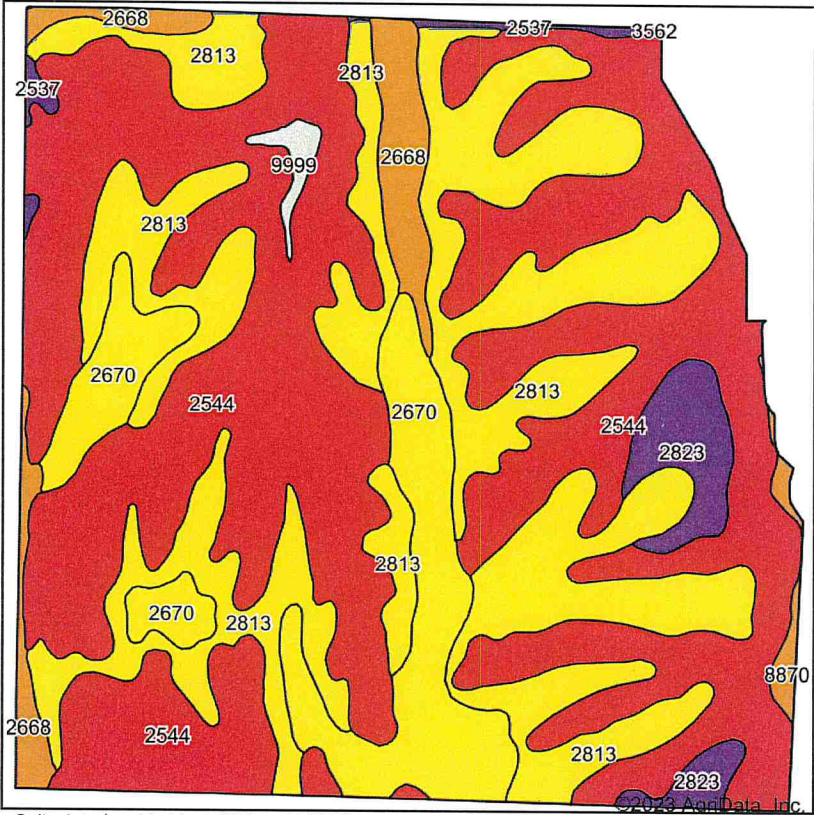
© AgriData, Inc. 2023 www.AgriDataInc.com

Area Symbol: NE019, Soil Area Version: 26							
Code	Soil Description	Acres	Percent of field	SRPG Legend	Non-Irr Class *c	Irr Class *c	SRPG
2544	Coly, Uly and Hobbs soils, 3 to 30 percent slopes	113.87	35.4%		Vle		24
2813	Uly and Holdrege silt loams, 6 to 11 percent slopes	74.68	23.2%		IVe	IVe	63
2671	Holdrege silt loam, 3 to 7 percent slopes, eroded	50.34	15.7%		Ile	Ile	70
2537	Coly silt loam, 6 to 11 percent slopes	46.24	14.4%		IVe	IVe	51
2533	Coly silt loam, 11 to 30 percent slopes	27.77	8.6%		Vle		30
2670	Holdrege silt loam, 3 to 7 percent slopes	8.40	2.6%		IIle	IIle	70
Weighted Average					4.54	*-	45.9

*c: Using Capabilities Class Dominant Condition Aggregation Method
*- Irr Class weighted average cannot be calculated on the current soils data due to missing data.

Soils data provided by USDA and NRCS.

Soils Map












State: **Nebraska**
County: **Buffalo**
Location: **19-11N-16W**
Township: **Rusco**
Acres: **587.78**
Date: **12/26/2023**

Maps Provided By:

**surety**
CUSTOMIZED ONLINE MAPPING
© AgriData, Inc. 2023 www.AgriDataInc.com



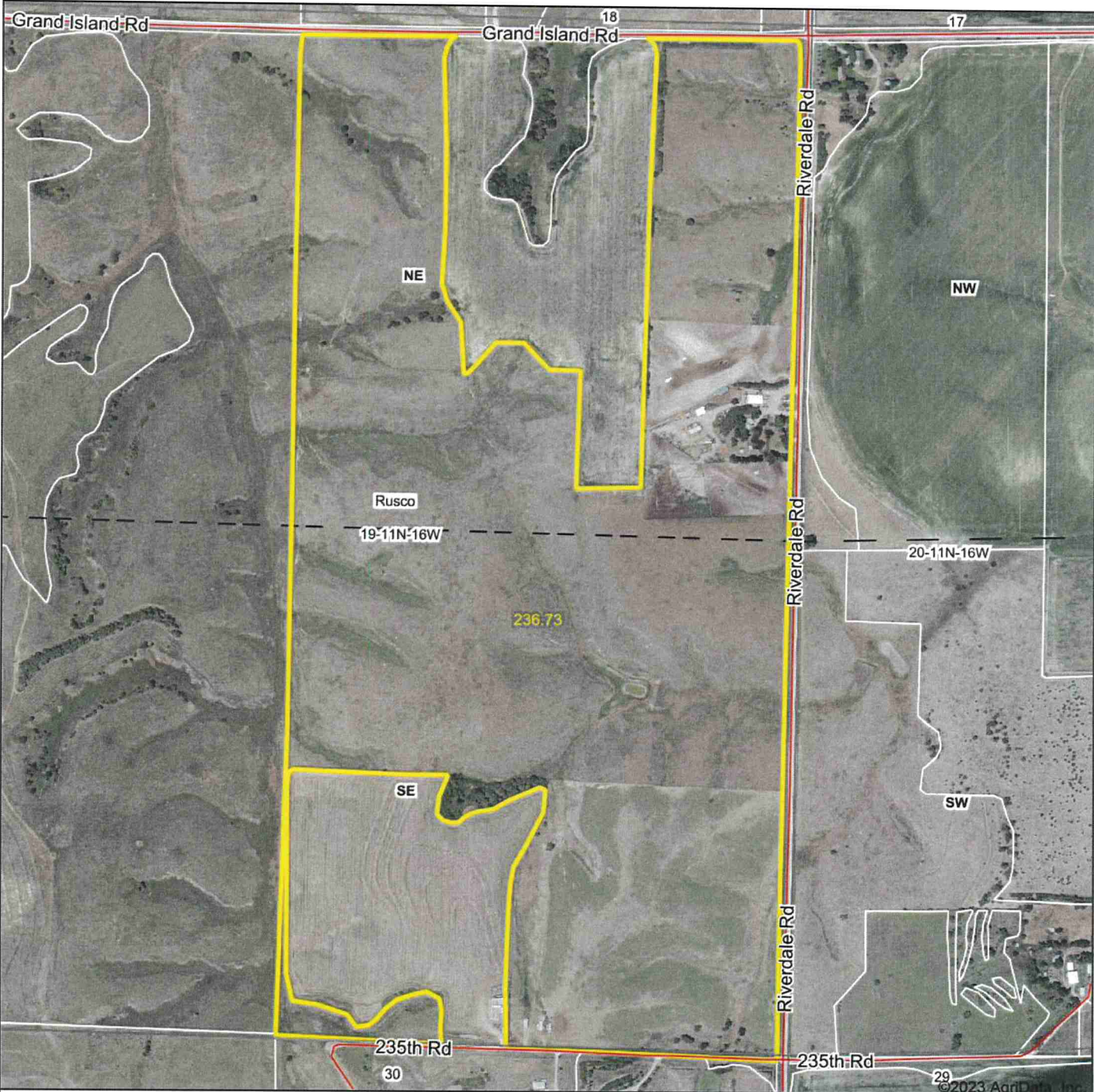
Soils data provided by USDA and NRCS.

Area Symbol: NE019, Soil Area Version: 26							
Code	Soil Description	Acres	Percent of field	SRPG Legend	Non-Irr Class *c	Irr Class *c	SRPG
2544	Coly, Uly and Hobbs soils, 3 to 30 percent slopes	303.23	51.6%		Vle		24
2813	Uly and Holdrege silt loams, 6 to 11 percent slopes	178.07	30.3%		IVe	IVe	63
2670	Holdrege silt loam, 3 to 7 percent slopes	58.04	9.9%		IIIe	IIIe	70
2668	Holdrege silt loam, 1 to 3 percent slopes	22.16	3.8%		Ile	Ile	72
2823	Uly silt loam, 11 to 17 percent slopes, eroded	17.02	2.9%		Vle		55
8870	Hord silt loam, 1 to 3 percent slopes	3.16	0.5%		Ile	Ile	74
2537	Coly silt loam, 6 to 11 percent slopes	3.08	0.5%		IVe	IVe	51
9999	Water	2.94	0.5%				
3562	Hobbs silt loam, occasionally flooded, cool	0.08	0.0%		IIw	IIw	
Weighted Average					*-	*-	43.4

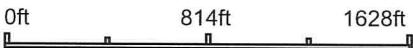
*c: Using Capabilities Class Dominant Condition Aggregation Method
*- Non Irr Class weighted average cannot be calculated on the current soils data due to missing data.
*- Irr Class weighted average cannot be calculated on the current soils data due to missing data.

Soils data provided by USDA and NRCS.

Aerial Map



Boundary Center: 40° 54' 30.68, -99° 9' 54.33



12/26/2023

Maps Provided By:
 **surety**
CUSTOMIZED ONLINE MAPPING
© AgriData, Inc. 2023 www.AgriDataInc.com

19-11N-16W
Buffalo County
Nebraska

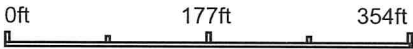
Field borders provided by Farm Service Agency as of 5/21/2008.

Aerial Map



©2023 AgriData, Inc.

Boundary Center: 40° 54' 37.39, -99° 9' 42.03



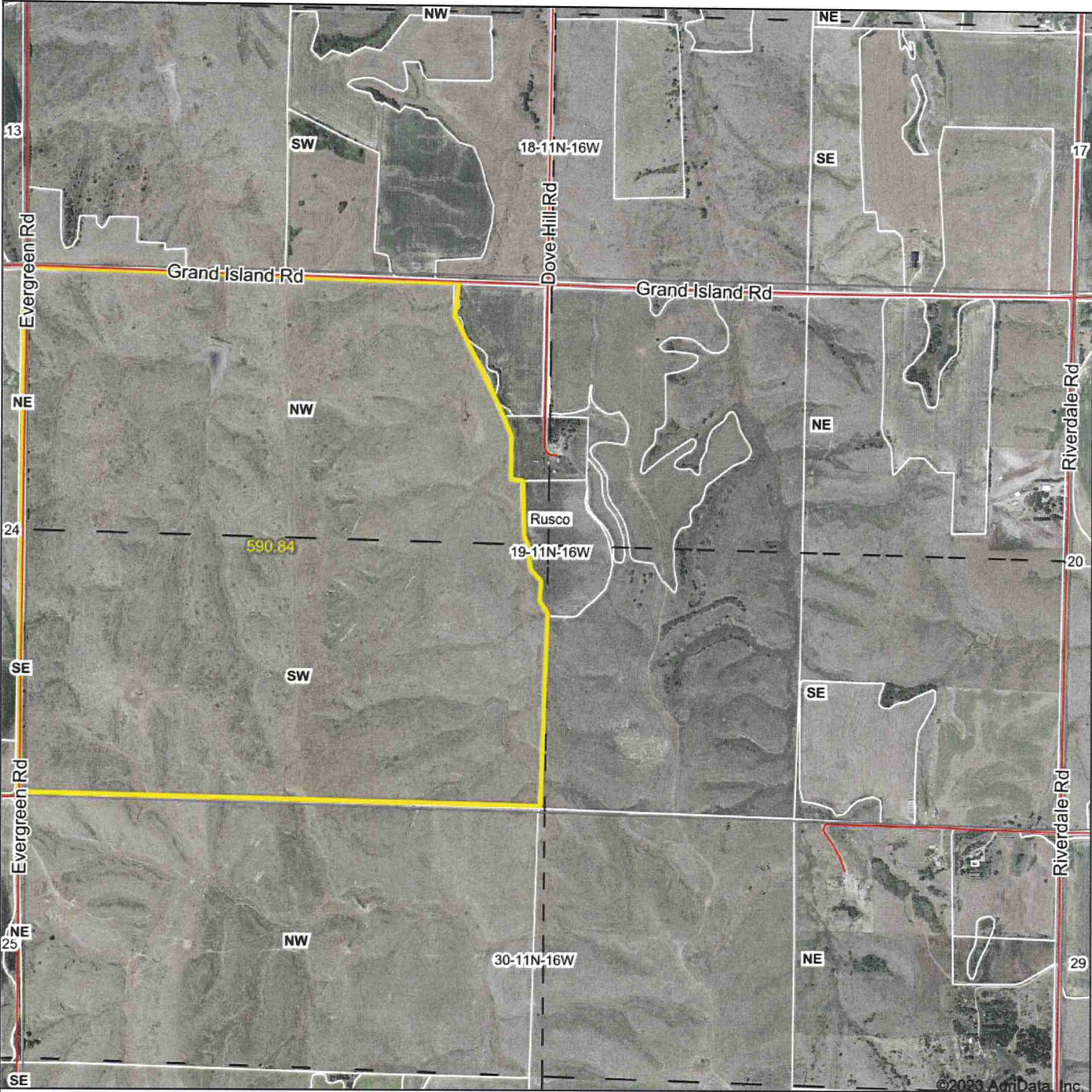
12/26/2023

Maps Provided By:
surety
CUSTOMIZED ONLINE MAPPING
© AgriData, Inc. 2023 www.AgriDataInc.com

19-11N-16W
Buffalo County
Nebraska

Field borders provided by Farm Service Agency as of 5/21/2008.

Aerial Map



Boundary Center: 40° 54' 32.89, -99° 11' 18.26

0ft 1550ft 3100ft

Maps Provided By:
surety
CUSTOMIZED ONLINE MAPPING
© AgriData, Inc. 2023 www.AgriDataInc.com

19-11N-16W
Buffalo County
Nebraska



12/26/2023

Field borders provided by Farm Service Agency as of 5/21/2008.