

# MULTI-PARTY FARM AUCTION

**Tuesday, March 17, 2020 • 10 A.M.**

**Sale site: South End of Red Cloud, NE, along Hwy. 281**

Items marked with an (\*) astrick will be sold with Internet Bidding starting at noon.  
Go to [www.montgomeryauction.com](http://www.montgomeryauction.com) to register and bid online.

**Red's Country Catering  
will be on grounds!**



## Trucks - Grain Trailers

- \*2010 Rebel 45' Steel Grain Trailer, air ride, tarp, air traps
- \*2000 IHC "Pro Sleeper" Semi-Tractor, Detroit engine, 10 spd., VIN 3HSFMAR1YMG84899
- \*1999 IHC "Pro Sleeper" Semi-Tractor, Detroit engine, 10 spd., VIN 2HSFHAMR9XCC050147
- \*1997 Hawk Model 3202 Steel Grain Trailer, 32', ag/auger hoppers, tarp good condition
- \*1990 Chevrolet Kodiak 7000 Single Axle Truck, gas engine, 5 spd., 2 spd., air brakes, 10' flatbed, 123,800 miles, good rubber runs good
- \*1986 Ford F700 Single Axle Truck, 8' flatbed w/ hoist, gas engine 5 spd., good rubber, 152,800 miles, needs tune-up
- \*1976 Trail EZ "Dakota" 44' Flatbed Machinery Trailer, hyd. beaver tail, hyd. wings, winch, serial #3351, one owner, low miles
- \*1976 GMC Truck, Cummins motor, 13 spd., 18' box w/66" sides-hoist, cargo doors, tarp, runs good
- \*1973 Ford F600 Single Axle Truck, V-8 gas engine, 4 spd., 2 spd., 16' box/hoist, 9:00x20 rubber, runs
- Headache Rack for semi, built by Dale McDole
- \*11 1/2 ft. snow plow for 2 ton truck
- \*8" Utility Box Complete



## ATV'S - Mowers - Trenchers & Related

- \*Vermeer Model V-30 Trencher, Wisconsin V4 engine, has a Vermeer V-16 attachment
- \*Toro Reel Master 5300D Fairway Mower, diesel engine, 4,555 hours, recent reconitions reels
- \*Ground Master #325D Mower w/72" deck, 5' 4 way angle snow blade, 25 h.p. Mitsubishi diesel, heater removable cab, runs good
- \*2013 Cub Cadet "Volunteer" Side by Side, diesel, 4x4, 2,593 hours, w/dump bed
- \*1998 Cushman Turf Truckster, #98005811, OMC 27 h.p. water cooled engine, hyd. lift on box, runs good
- \*1998 Cushman Truckster, 3 cyl. gas, 31 h.p. engine
- \*Toro "Workman" HDX Cab Chassis, parts or rebuilder
- \*Roseman 12" 5 section turf mower, pull type

**TERMS OF SALE:** Cash, Check, Credit Card (with 4% Administration Fee) day of Auction. Internet buyers will pay a 2.5% convenience fee. Nothing removed until settled for. Merchandise at Bidder's risk after bid off. Owners and Auction Company not responsible for accidents or theft. All Announcements day of Auction take precedence over any other Advertising or Statements.



## Camper - Pickup - Cars

- \*2004 Jayco "Jay Flight" 28' Gooseneck Travel Trailer, slide out, sleeps 9, awning, A/C & heat works, refrigerator-sink-stove-microwave-bathroom, ready to use
- \*2005 Buick Lacrosse, 4 door, 3800 engine, automatic, loaded, 105,000 miles, nice
- \*2000 Ford E250 Cargo Van, V-8, auto, runs fine, some rust
- \*1999 Ford F350 Pickup, 7.3 powerstroke diesel, auto trans., 8' flatbed, grill guard, good rubber, 190,950 miles, VIN 1FDSF35F2XED39065
- \*1999 Chevrolet Geo Tracker, 2 door, 1.6L engine w/new timing belt, 5 spd., 4x4, aftermarket hard top, 137,000 miles
- \*1999 Chevrolet S10 Ext. Cab Pickup, 4 cyl. auto, 4x4, runs
- \*1995 Ford F250 Regular Cab Pickup, flatbed, 460 gas, 5 spd. trans., 174,475 miles, VIN 2FTHF26G85CA12118
- \*1983 Chevrolet El Camino, 2 door, hardtop, diesel engine (head gasket out), 45,000 miles, No rust or dents
- \*1988 Oldsmobile Regency Brougham, 4 door, loaded, V-6 engine, auto, runs
- \*1981 Chevrolet K30 Dually Pickup, 454 V-8, 4 spd., flatbed
- \*7x14 Flatbed Trailer, will haul a car
- \*6x18 Trailer w/low sides
- 1950's Ford Pickup Box

## Building Supplies

Several Lots of new building supplies, such as garage doors, house doors, siding, windows, many other discontinued and special order items, there will be a large selection

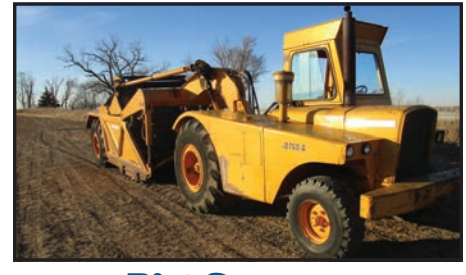
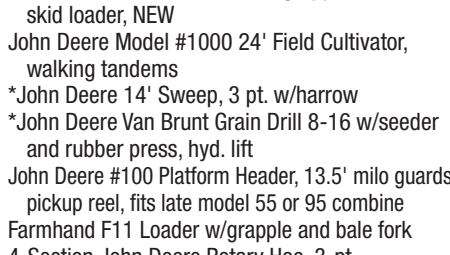
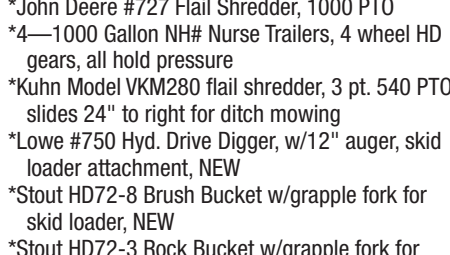
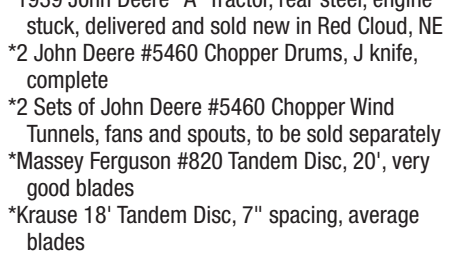
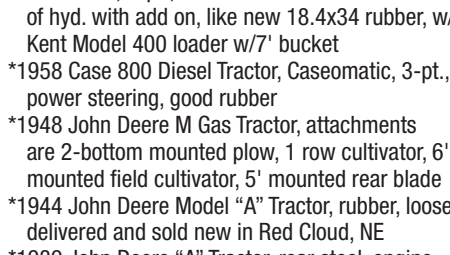
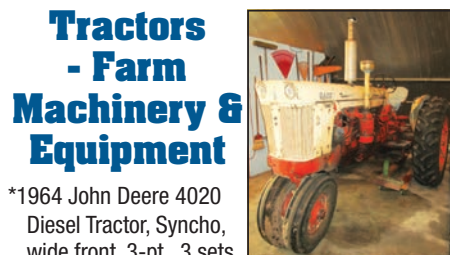
## Hay

- 10 Big Round bales of Alfalfa, net wrapped
- 10 Big Round Bales of Grass Hay, net wrapped
- 10 Big Round Bales of Wheat Straw, net wrapped

## Red Cloud Boy's Scout Items

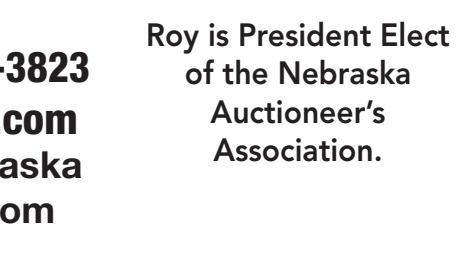
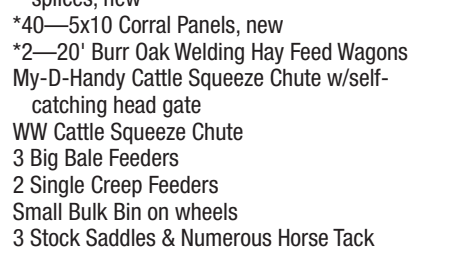
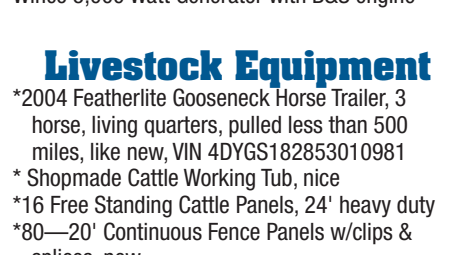
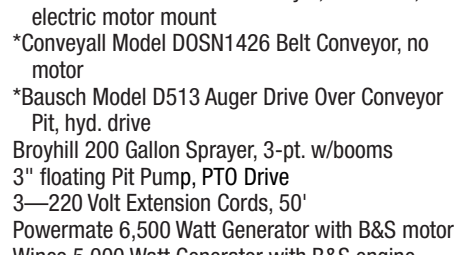
- 3—15' Aluminum Canoes in good condition
- Several Tents, Camping Supplies and other items from Scout Club, proceeds being donated to Red Cloud Lion's Club

- Cushman 3 Wheel Scooter Model 898507-7910, 60 gallon sprayer, runs fine
- \*Honda 200TRX 2WD 3 Wheeler, runs good
- \*2000? E-Z-Go 4 Wheel Golf Cart, top, runs fine, need batteries, from an estate
- Lely 500# Pull-Type Spreader, 2 wheel Daihatsu Model DM9506 Diesel Engine
- 3-Pt. Log Splitter w/hydraulic cylinder
- Nepco Space Heater, works fine
- Lincoln 225 Amp Arc Welder/Generator, gas engine
- DeWalt 12" Radial Arm Saw, 220V
- DeWalt 8" Radial Arm Saw, 120V
- Sears 9" Mitre Saw
- Clinton Power Vibrator Screen
- Cement Float, Trowel, Aggregate Roller
- 1-2 Trailer Loads of Nice Construction Items from retired contractor
- \*Land Pride Model 2572, Finish mower, 3 pt.



## Dirt Scraper

- \*1973 John Deere #760A 9 1/2 Yard Paddle Scraper, 531 engine, 8 speed powershift, 23.5x25 rubber, hour meter broke, works good, serial #31206



## Tractors - Farm Machinery & Equipment

- \*1964 John Deere 4020 Diesel Tractor, Syncho, wide front, 3-pt., 3 sets of hyd. with add on, like new 18.4x34 rubber, w/ Kent Model 400 loader w/7' bucket
- \*1958 Case 800 Diesel Tractor, Caseomatic, 3-pt., power steering, good rubber
- \*1948 John Deere M Gas Tractor, attachments are 2-bottom mounted plow, 1 row cultivator, 6' mounted field cultivator, 5' mounted rear blade
- \*1944 John Deere Model "A" Tractor, rubber, loose, delivered and sold new in Red Cloud, NE
- \*1939 John Deere "A" Tractor, rear steel, engine stuck, delivered and sold new in Red Cloud, NE
- \*2 John Deere #5460 Chopper Drums, J knife, complete
- \*2 Sets of John Deere #5460 Chopper Wind Tunnels, fans and spouts, to be sold separately
- \*Massey Ferguson #820 Tandem Disc, 20', very good blades
- \*Krause 18' Tandem Disc, 7" spacing, average blades
- \*John Deere #727 Flail Shredder, 1000 PTO
- \*4—1000 Gallon NH# Nurse Trailers, 4 wheel HD gears, all hold pressure
- \*Kuhn Model VKM280 flail shredder, 3 pt. 540 PTO, slides 24" to right for ditch mowing
- \*Lowe #750 Hyd. Drive Digger, w/12" auger, skid loader attachment, NEW
- \*Stout HD72-8 Brush Bucket w/grapple fork for skid loader, NEW
- \*Stout HD72-3 Rock Bucket w/grapple fork for skid loader, NEW
- John Deere Model #1000 24' Field Cultivator, walking tandems
- \*John Deere 14' Sweep, 3 pt. w/harrow
- \*John Deere Van Brunt Grain Drill 8-16 w/seed and rubber press, hyd. lift
- John Deere #100 Platform Header, 13.5' milo guards, pickup reel, fits late model 55 or 95 combine
- Farmhand F11 Loader w/grapple and bale fork
- 4-Section John Deere Rotary Hoe, 3-pt.
- 3-Pt. 4 Row Hiller, JD Bar
- 100 Bu. 4 Wheel Trailer w/hoist
- Flare Box Trailer, New Holland gear
- John Deere #1064 4-Wheel Running Gear, bent hoist, 10:00x15 tires, like new, silage box available
- Homemade 3-Pt. Disc Track Closer, light duty
- Several Pieces of 2 row-small tractor machinery

## Sprayers - Grain Equipment

- \*2000 Patriot Model 3200B Sprayer, Cummins engine, 60x80 booms, 800-gal. tank, Raven monitor, hours unknown
- \*1999 Mertz Model 4300 Floater, 3208 Cat engine, 75' booms, 1800-gal. tank, Raven monitor
- \*Brant Model #1585 Belt Conveyor, PTO drive, has electric motor mount
- \*Conveyall Model DOSN1426 Belt Conveyor, no motor
- \*Bausch Model D513 Auger Drive Over Conveyor Pit, hyd. drive
- Broyhill 200 Gallon Sprayer, 3-pt. w/booms
- 3" floating Pit Pump, PTO Drive
- 3—220 Volt Extension Cords, 50'
- Powermate 6,500 Watt Generator with B&S motor
- Winco 5,000 Watt Generator with B&S engine

## Livestock Equipment

- \*2004 Featherlite Gooseneck Horse Trailer, 3 horse, living quarters, pulled less than 500 miles, like new, VIN 4DYGS182853010981
- \*Shopmade Cattle Working Tub, nice
- \*16 Free Standing Cattle Panels, 24' heavy duty
- \*80—20' Continuous Fence Panels w/clips & splices, new
- \*40—5x10 Corral Panels, new
- \*2—20' Burr Oak Welding Hay Feed Wagons
- My-D-Handy Cattle Squeeze Chute w/self-catching head gate
- WW Cattle Squeeze Chute
- 3 Big Bale Feeders
- 2 Single Creep Feeders
- Small Bulk Bin on wheels
- 3 Stock Saddles & Numerous Horse Tack

## Roy Montgomery

Auctioneer/Real Estate Broker

Home: 402-257-2335 • Cell : 402-746-3823

Website: [www.montgomeryauction.com](http://www.montgomeryauction.com)

1141 Highway 78, Guide Rock, Nebraska

Email: [info@montgomeryauction.com](mailto:info@montgomeryauction.com)

Roy is President Elect of the Nebraska Auctioneer's Association.



**MONTGOMERY  
AUCTION & REALTY**  
L.L.C.



1141 Hwy. 78  
Guide Rock, NE 68942