

GOEBEL ESTATE ^{A N D} CLOCK AUCTION

**Saturday, October 8, 2016
9:00 a.m.**

**Sale to be held at the Community Center
(142 W 3rd Avenue), Red Cloud, NE.
Red's Country Catering On Grounds**

Selling 144 Lots of Collector Clocks including: Waterbury, Ingraham, Sessions, Seth Thomas, New Haven, Newark, Gilbert, Stellar, Ansonia, Welch, Polaris, Daekor, Tempus Fugit, Dugena, RA and others. Some styles are: Kitchen, Parlor, Wall, Mantle, Camel back, Cast Iron, School House, Round Top and others. Some features are Ornate, OG, Alarm, Chimes, 31 & 35 day, Etched Faces, Germany, Japan & France origin's. *A PREVIEW will be held on Friday October 7th, from 5-8 p.m.*

Auction will begin at 9:00 am selling clock parts, non-working clocks, clock tools and related with live and internet bidding on Proxibid beginning at 9:15 a.m. Starting with Lot #1 and preceding to Lot#144. All lots and pictures are on Auction company website: www.montgomeryauction.com.

Leo attended auctions and purchased then repaired and enjoyed for many years. All clocks were in his home and believed to be in working condition. Due to be

transported, setup for display for auction, all will be sold in "as is" condition! This is an amazing lifetime collection, Plan to attend and appreciate clocks from our Past.



**Selling at 12:00 Noon (or as soon as possible after Clock Auction)
at 33 Walnut, Red Cloud, NE.**

PICKUPS - TRACTOR - MOWERS - LOG SPLITTER



2011 Ford F150 Super Crew cab pickup, 4X4, 3.5 V-6 engine automatic trans., keyless entry, loaded, running boards, white/black interior, 31,700 actual miles; 2000 GMC 1500 short box pickup, 4X4, 5.3 V-8, automatic trans., black color, runs good; 1952 John Deere "60" gas Tractor; John Deere LA 120 riding lawn mower, 21 hp. 42" cutting deck, approximately 120 hours; White LT185 riding lawn mower, 18 hp. 38" cutting deck, runs good; Yard Machine 5 hp. 20 ton log splitter on 2 wheels, like new.



WOODWORKING, SHOP TOOLS & RELATED

Craftsman model #149 4 ft. turning lathe; Protech 10" compound saw; Craftsman 10" band saw; Tool Shop bench top drill press; Protech table saw; Craftsman router and table; Terformak belt sander on stand; Terformak Jig saw; Craftsman 1/2 hp. Grinder on stand; Black & Decker 9.6 volt cordless drill; Ryobi 12 volt cordless drill; Sanborn air compressor on wheels; 2 Dremel tool sets in case; Stihl 028AV chain saw on case, like new; 2 garden tillers; 2 gas weed eaters; Hammers, pipe wrenches, vise grips, open & box end wrenches, screwdrivers, all sorts hand tools; Rakes, forks, shovels, hoes, diggers, other tools all kinds; Log chains; Hydraulic jacks; Battery Chargers; Yard swing; wood picnic table; 2 trailer loads of Yard & shop tools, supplies and related items.



GUNS & RELATED

Must be 18 or 21, Nebraska resident and Follow ATF laws to purchase. Savage #110 22-250 rifle with scope; Beretta model U22NEOS pistol; Browning "Buck Mark" 22 LR pistol; Iver Johnson "Trailman" 22 cal. pistol; Tasco model #312 Binoculars; Other related equipment.

VIOLINS - GUITARS

Alamo Jet Stil Guitar; Guarnerunts Grand Solo Violin; Teisco Violin; Jensen Violin; 4 string Guitar; Old Red Violin; Gibson electric Keyboard; Old records 1960-1970's, most country; Leo played in a band and enjoyed music, very nice selection.



APPLIANCES - HOUSEHOLD

RCA 18.2 cubic ft. cross top ref/freezer; Kenmore HD clothes washer, white; Kenmore electric clothes dryer, white; Rival microwave; 3 pcs. Full sized bedroom set, box springs & mattress; Sofa-couch w recliner chairs on ends, nice; La-Z-Boy brown recliner; Lt. Blue recliner chair; end tables & night stands; Kitchen dinette table and 4 roller chairs; Small wood desk; 4 drawer file cabinet; Stainless steel 3 gallon pot w/lid; 1 trailer load of household items, pots, pans, dishes, electrical appliances and related.

COLLECTABLES

Small square parlor table w/swirl legs; piano stool; Horse waterfall; John Deere wrench; Ammo box; metal yard gate; 2 pump heads; Old harness hames; metal sprinkler can; Radio-T.V. repair equipment and related; Other collectables not yet found.

LEO GOEBEL ESTATE, OWNER

Roy Montgomery,

**Auctioneer/Real Estate Broker
Hm: 402-257-2335, Cell: 402-746-3823,
Website: www.montgomeryauction.com
Email: info@montgomeryauction.com**

Terms of Sale: Cash or good check day of auction. Nothing removed until settled for. Merchandise at bidder's risk after bid off. All items sell "AS IS, WHERE IS", no exceptions. Owners and Auction Company not responsible for accidents or theft.

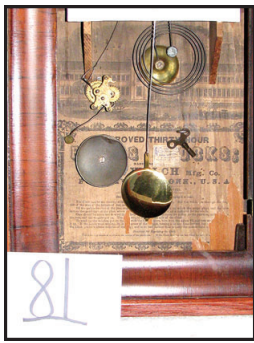
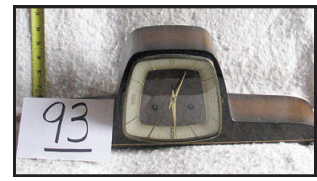
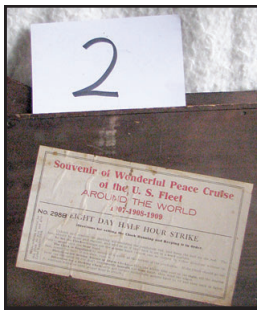


**MONTGOMERY
AUCTION & REALTY**

**1141 HIGHWAY 78
GUIDE ROCK, NEBRASKA**

Printed by Waconda Trader

See Pictures on Back



**LEO GOEBEL ESTATE
AUCTION**
Saturday, October 8, 2016
9:00 a.m.