

BELDEN ESTATE FARM AUCTION

Thursday, May 23, 2019 • 10:00 A.M.

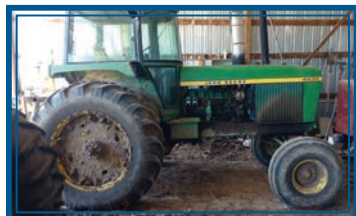
Sale site: 792 Rd. X, Burr Oak, Kansas

From Burr Oak, go 3 miles west, 2 miles north and 3/4 west. Or from North Branch, go 2 miles south, 1/2 mile east, 3 miles south and 3/4 west.

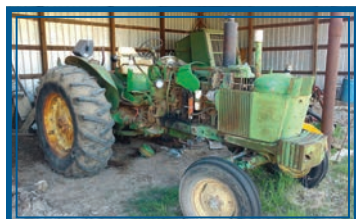
Items marked with an (*) astrick will be sold Live and with Similcast Internet Bidding  **Bid Caller.**
Go to www.montgomeryauctiononline.com to register to bid. Simulcast bidding will start at approximately 12 noon.

**Red's Country Catering
will be on grounds!**

Tractors, Loader, Truck, ATV



*1973 John Deere 4430 Diesel Tractor, cab, air, quad trans., 2 hyd., 3-pt., 18.4x38 rear, 11:00x16 front, tach shows 4,423 hrs., SN 02367



*1964 John Deere 4020 Diesel Tractor, WF, 2 hyd., 3-pt., 18.4x34 rear, 7.50x16 fronts, SN 87222

Livestock Equipment, Bins

20 U-Shaped Cement Fence Line Feed Bunks w/cable, must be removed by July 1, 2019



3-2,250-Bu. Grain Bins, to be removed by July 1, 2019
WW Squeeze Chute w/self catch, head gate
4 Burr Oak Welding Hay Wagons
3-Ton Bulk Bin, to be removed
3-Pt. Post Hole Digger w/12" auger, PTO drive
2 Burr Oak Welding 3-Pt Bale Forks
2 Bale Feeders
Vet Supplies
2 Pickup Stock Racks



*1968 John Deere 4020 Diesel Tractor, WF, 2 hyd., 3-pt., 18.4x34 rears, 10:00x16 fronts, has bad engine, SN 179154

*Farmhand XL740 Loader, 7' quick-tach bucket, like new, currently on 4020, will be sold separate

*IHC M Gas Tractor, WF, new 14.9x38 rear tires, not ran for years, sells with Farmhand F11 loader

*1965 Ford F600 2-Ton Truck, 16' box/hoist, 9:00x20 rubber, not licensed for several years



*2001 Honda 4-Wheeler, 4WD, electric shift, 8,011 hrs., 6,964 miles, runs, PRX 420 SPA
2 Pickup Box Trailers
2 4x6 Utility Trailers



Selling for Jim Hayes

1970 JI Case Model M570-AT Industrial Tractor, 4-cyl. gas, cab w/loader, 4,535 hrs., new 13.50x24 rear tires, sold new and used at the Harvard, NE, air base

Farm Machinery



*Agco Hesston Model 3312 12-Pt. Rotary Windrower, hydro swing, 1000 PTO, shedded, bought new, SN 56628

*John Deere 530 Big Round Baler, 540 PTO, shedded

*Krause Model 901 18' Tandem Disk, folding, harrow, good blades

*Krause Model 1495 12' Offset Disk, 22" blades, dual wheels

*Krause Model 619 14' Tandem Disk, 17.5" blades

*John Deere 4-16 Semi Mount Plow

*John Deere 100 12' Chisel Plow, points

*New Holland 256 Side Delivery Rake

*New Holland 456 9' Sickle Mower, needs work

*IHC 45 18' Vibra Shank Field Cultivator

*Welco Bale Accumulator

*Welco Bale Fork for loader

*Burr Oak Welding 4 Bale Self Dumping Trailer, 9:00x20 tires

*Farmhand 8' Snow Bucket, good for skid loader

20-25 Pcs. Machinery for parts or scrap

**All items must
be removed by
June 1, 2019,
unless noted
otherwise**

Shop Tools, Equipment



18x20 Car Port, to be moved
Lincoln 225 Amp AC/DC Welder, 220-Volt

Century Wire Feed Welder, Model 125GL

Chicago 110-Volt Electric Welder

Magna Force Air Compressor, 100-Volt

Oxygen Bottle w/gauge, hoses

Pittsburg 3/4" Set Sockets

5/8" Bench Top Drill Press

1/4-H.P. Bench Grinder

Makita Sawzall

Remington Pole Saw

Center Machine 10" Table Saw

Large Set Threaders

Small Power Tools of all kinds

Hammers, Sockets, Wrenches, open & box end, All Kinds of

Small Tools, some new

Pickup Toolboxes

Bolt Bin w/bolts

Air Bubbles

Battery Charger

A/C Gauges

Toolboxes, all sizes

Poulan 175-H.P. Riding Mower

4 Extension Ladders

Jack Stands

Handyman Jacks

2 Live Traps

Measuring Wheel

Hand Tools, Shovels, Rakes, Hoes, Axes, Sledges, Forks & More

500-Gal. LP Tank

3 300-Gal. Fuel Tanks & Stands

Fishing Equipment

1-2 Trailer Loads of Good Usable

Shop Items

Gun, Collectibles

Ukelin

Musical Instrument in case

Remington

22 Long

Rifle only,

auto.,

#A2165158

Round Top

Trunk

Small Pot

Belly Wood

Stove

3 Iron Bed

Frames, complete

Oak Upper Cabinet w/3 frosted

glass doors, nice

Philco Radio, 1940s

1 1902 Liberty Dollar

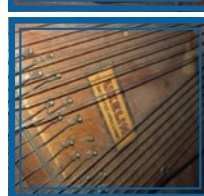
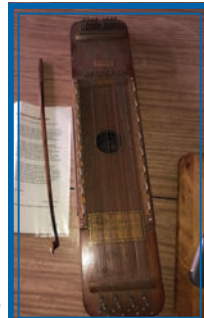
Set Welding Rings, M&F

Oak 3-Drawer Dresser

Kerosene Lamp

Ornate Woodwork from House

Other Collectibles to be found



Household

Maytag Matching Washer & Dryer, white

General Electric Glass Top Refrigerator/Freezer, ice maker, white

Galore LP Gas Cook Stove, white

Small Chest Deep Freeze

Rheem Marlon Electric Hot Water Heater, not too old

LP Gas Heating Stove

110-Volt Room Air Conditioner

Wood Stove, mounts outside home, ducts into

2 Flat Screen TVs

Plywood Wardrobe

Hercules Fire Safe w/key

Pots, Pans, Small Furniture & Other Items not mentioned

GALE BELDEN ESTATE

Guaranty State Bank & Trust Co., Executors

TERMS OF SALE: Cash, Check (Credit Card with 4% Administration Fee) day of Auction. Internet buyers will pay a 3% convenience fee. Absentee or phone bids will be subject to a 5% (\$20 minimum) convenience fee. Nothing removed until settled for. Merchandise at Bidder's risk after bid off. Owners and Auction Company not responsible for accidents or theft. All Announcements day of Auction take precedence over any other Advertising or Statements.



Roy Montgomery
Auctioneer/Real Estate Broker
Home: 402-257-2335 • Cell : 402-746-3823
Website: www.montgomeryauction.com
1141 Highway 78, Guide Rock, Nebraska
Email: info@montgomeryauction.com

Roy is Vice President of the Nebraska Auctioneer's Association.

